


Hex Bushing
300 PSIW @ 70° F

Part # PIP-	Male Pipe (1)	Female Pipe (2)	S
BUSHING-4-2	1/4"	1/8"	*
BUSHING-6-2	3/8"	1/8"	*
BUSHING-6-4		1/4"	*
BUSHING-8-2	1/2"	1/8"	*
BUSHING-8-4		1/4"	*
BUSHING-8-6		3/8"	*
BUSHING-12-2	3/4"	1/8"	*
BUSHING-12-4		1/4"	*
BUSHING-12-6		3/8"	*
BUSHING-12-8		1/2"	*
BUSHING-16-2	1"	1/8"	*
BUSHING-16-4		1/4"	*
BUSHING-16-6		3/8"	*
BUSHING-16-8		1/2"	*
BUSHING-16-12		3/4"	*
BUSHING-20-8	1-1/4"	1/2"	*
BUSHING-20-12		3/4"	*
BUSHING-20-16		1"	*
BUSHING-24-8	1-1/2"	1/2"	*
BUSHING-24-12		3/4"	*
BUSHING-24-16		1"	*
BUSHING-24-20		1-1/4"	*
BUSHING-32-8	2"	1/2"	*
BUSHING-32-12		3/4"	*
BUSHING-32-16		1"	*
BUSHING-32-20		1-1/4"	*
BUSHING-32-24		1-1/2"	*
BUSHING-40-16	2-1/2"	1"	*
BUSHING-40-20		1-1/4"	*
BUSHING-40-24		1-1/2"	*
BUSHING-40-32		2"	*
BUSHING-48-16	3"	1"	*
BUSHING-48-24		1-1/2"	*
BUSHING-48-32		2"	*
BUSHING-48-40		2-1/2"	*
BUSHING-64-16	4"	1"	*
BUSHING-64-24		1-1/2"	*
BUSHING-64-32		2"	*
BUSHING-64-40		2-1/2"	*
BUSHING-64-48		3"	*
BUSHING-80-48	5"	4"	*
BUSHING-96-48	6"	3"	*
BUSHING-96-64		4"	*


Square Plug
300 PSIW @ 70° F

Part # PIP-	Male Pipe (1)		S
PLUG-2	1/8"		*
PLUG-4	1/4"		*
PLUG-6	3/8"		*
PLUG-8	1/2"		*
PLUG-12	3/4"		*
PLUG-16	1"		*
PLUG-20	1-1/4"		*
PLUG-24	1-1/2"		*
PLUG-32	2"		*
PLUG-40	2-1/2"		*
PLUG-48	3"		*
PLUG-64	4"		*
PLUG-96	6"		*


Pipe Cap
300 PSIW @ 70° F

Part # PIP-	Female Pipe (1)		S
CAP-2	1/8"		*
CAP-4	1/4"		*
CAP-6	3/8"		*
CAP-8	1/2"		*
CAP-12	3/4"		*
CAP-16	1"		*
CAP-20	1-1/4"		*
CAP-24	1-1/2"		*
CAP-32	2"		*
CAP-40	2-1/2"		*
CAP-48	3"		*
CAP-64	4"		*
CAP-96	6"		*


Bell Reducer
300 PSIW @ 70° F

Part # PIP-	Female Pipe (1)	Female Pipe (2)	S
REDUCER-4-2	1/4"	1/8"	*
REDUCER-6-2	3/8"	1/8"	*
REDUCER-6-4		1/4"	*
REDUCER-8-2	1/2"	1/8"	*
REDUCER-8-4		1/4"	*
REDUCER-8-6		3/8"	*
REDUCER-12-2	3/4"	1/8"	*
REDUCER-12-4		1/4"	*
REDUCER-12-6		3/8"	*
REDUCER-12-8		1/2"	*
REDUCER-16-4	1"	1/4"	*
REDUCER-16-6		3/8"	*
REDUCER-16-8		1/2"	*
REDUCER-16-12		3/4"	*
REDUCER-20-8	1-1/4"	1/2"	*
REDUCER-20-12		3/4"	*
REDUCER-20-16		1"	*
REDUCER-24-8	1-1/2"	1/2"	*
REDUCER-24-12		3/4"	*
REDUCER-24-16		1"	*
REDUCER-24-20		1 1/4"	*
REDUCER-32-8	2"	1/2"	*
REDUCER-32-12		3/4"	*
REDUCER-32-16		1"	*
REDUCER-32-20		1 1/4"	*
REDUCER-32-24		1 1/2"	*
REDUCER-40-16	2-1/2"	1"	*
REDUCER-40-20		1 1/4"	*
REDUCER-40-24		1 1/2"	*
REDUCER-40-32		2"	*
REDUCER-48-16	3"	1"	*
REDUCER-48-20		1 1/4"	*
REDUCER-48-24		1 1/2"	*
REDUCER-48-32		2"	*
REDUCER-48-40		2 1/2"	*
REDUCER-64-16	4"	1"	*
REDUCER-64-24		1 1/2"	*
REDUCER-64-32		2"	*
REDUCER-64-40		2 1/2"	*
REDUCER-64-48		3"	*
REDUCER-96-48	6"	3"	*
REDUCER-96-64		4"	*


Pipe Collar
300 PSIW @ 70° F

Part # PIP-	Female Pipe (1)		S
COLLAR-MI-2	1/8"		*
COLLAR-MI-4	1/4"		*
COLLAR-MI-6	3/8"		*
COLLAR-MI-8	1/2"		*
COLLAR-MI-12	3/4"		*
COLLAR-MI-16	1"		*
COLLAR-MI-20	1-1/4"		*
COLLAR-MI-24	1-1/2"		*
COLLAR-MI-32	2"		*
COLLAR-MI-40	2-1/2"		*
COLLAR-MI-48	3"		*
COLLAR-MI-64	4"		*
COLLAR-MI-96	6"		*


Merchant Coupling
300 PSIW @ 70° F

Part # PIP-	Female Pipe (1)		S
COLLAR-2	1/8"		*
COLLAR-4	1/4"		*
COLLAR-6	3/8"		*
COLLAR-8	1/2"		*
COLLAR-12	3/4"		*
COLLAR-16	1"		*
COLLAR-20	1-1/4"		*
COLLAR-24	1-1/2"		*
COLLAR-32	2"		*
COLLAR-40	2-1/2"		*
COLLAR-48	3"		*
COLLAR-64	4"		*
COLLAR-96	6"		*


Railroad Union
300 PSIW @ 70° F

Part # PIP-	Female Pipe (1)		S
RR-150-2	1/8"		*
RR-150-4	1/4"		*
RR-150-6	3/8"		*
RR-150-8	1/2"		*
RR-150-12	3/4"		*
RR-150-16	1"		*
RR-150-20	1-1/4"		*
RR-150-24	1-1/2"		*
RR-150-32	2"		*
RR-150-40	2-1/2"		*
RR-150-48	3"		*
RR-150-64	4"		*

B.O.E Bevelled One End
 P.O.E Plain One End
 T.O.E Threaded One End
 B.B.E Bevelled Both Ends
 P.B.E Plain Both Ends
 T.B.E Threaded Both Ends
 SW Socket Weld
 THD Threaded

**Black Pipe Fittings
Schedule 40**



Street Elbow 45°
300 PSIW @ 70° F

Part # PIP-	Male Pipe (1)	Female Pipe (2)	S
45-STR-ELB-2	1/8"	1/8"	*
45-STR-ELB-4	1/4"	1/4"	*
45-STR-ELB-6	3/8"	3/8"	*
45-STR-ELB-8	1/2"	1/2"	*
45-STR-ELB-12	3/4"	3/4"	*
45-STR-ELB-16	1"	1"	*
45-STR-ELB-20	1-1/4"	1-1/4"	*
45-STR-ELB-24	1-1/2"	1-1/2"	*
45-STR-ELB-32	2"	2"	*
45-STR-ELB-40	2-1/2"	2-1/2"	*
45-STR-ELB-48	3"	3"	*
45-STR-ELB-64	4"	4"	*



Elbow 45°
300 PSIW @ 70° F

Part # PIP-	Male Pipe (1)	Female Pipe (2)	S
45-ELB-2	1/8"	1/8"	*
45-ELB-4	1/4"	1/4"	*
45-ELB-6	3/8"	3/8"	*
45-ELB-8	1/2"	1/2"	*
45-ELB-12	3/4"	3/4"	*
45-ELB-16	1"	1"	*
45-ELB-20	1-1/4"	1-1/4"	*
45-ELB-24	1-1/2"	1-1/2"	*
45-ELB-32	2"	2"	*
45-ELB-40	2-1/2"	2-1/2"	*
45-ELB-48	3"	3"	*
45-ELB-64	4"	4"	*



Street Elbow 45°
300 PSIW @ 70° F

Part # PIP-	Male Pipe (1)	Female Pipe (2)	S
90-STR-ELB-2	1/8"	1/8"	*
90-STR-ELB-4	1/4"	1/4"	*
90-STR-ELB-6	3/8"	3/8"	*
90-STR-ELB-8	1/2"	1/2"	*
90-STR-ELB-12	3/4"	3/4"	*
90-STR-ELB-16	1"	1"	*
90-STR-ELB-20	1-1/4"	1-1/4"	*
90-STR-ELB-24	1-1/2"	1-1/2"	*
90-STR-ELB-32	2"	2"	*
90-STR-ELB-40	2-1/2"	2-1/2"	*
90-STR-ELB-48	3"	3"	*
90-STR-ELB-64	4"	4"	*



**Street Elbow 90°
Reducing**
300 PSIW @ 70° F

Part # PIP-	Male Pipe (1)	Female Pipe (2)	S
90-STR-ELB-6-8	3/8"	1/2"	
90-STR-ELB-8-12	1/2"	3/4"	
90-STR-ELB-12-16	3/4"	1"	
90-STR-ELB-12-20		1 1/4"	
90-STR-ELB-12-24		1 1/2"	
90-STR-ELB-16-20	1"	1 1/4"	
90-STR-ELB-16-24		1 1/2"	
90-STR-ELB-20-24	1-1/4"	1 1/2"	
90-STR-ELB-24-32	1-1/2"	2"	



Elbow 90°
300 PSIW @ 70° F

Part # PIP-	Female Pipe (1)	Female Pipe (2)	S
90-ELB-2	1/8"	1/8"	*
90-ELB-4	1/4"	1/4"	*
90-ELB-6	3/8"	3/8"	*
90-ELB-8	1/2"	1/2"	*
90-ELB-12	3/4"	3/4"	*
90-ELB-16	1"	1"	*
90-ELB-20	1-1/4"	1-1/4"	*
90-ELB-24	1-1/2"	1-1/2"	*
90-ELB-32	2"	2"	*
90-ELB-40	2-1/2"	2-1/2"	*
90-ELB-48	3"	3"	*
90-ELB-64	4"	4"	*



**Elbow 90°
Reducing**
300 PSIW @ 70° F

Part # PIP-	Female Pipe (1)	Female Pipe (2)	S
90-ELB-4-2	1/4	1/8	
90-ELB-6-2	3/8	1/8	
90-ELB-6-4		1/4	
90-ELB-8-4	1/2	1/4	
90-ELB-8-6		3/8	
90-ELB-12-4	3/4	1/4	
90-ELB-12-6		3/8	
90-ELB-12-8		1/2	
90-ELB-16-6	1	3/8	
90-ELB-16-8		1/2	
90-ELB-16-12		3/4	
90-ELB-20-8	1 1/4	1/2	
90-ELB-20-12		3/4	
90-ELB-20-16		1	
90-ELB-24-12	1 1/2	3/4	
90-ELB-24-16		1	
90-ELB-24-20		1 1/4	
90-ELB-32-12	2	3/4	
90-ELB-32-16		1	
90-ELB-32-20		1 1/4	
90-ELB-32-24		1 1/2	
90-ELB-40-24	2 1/2	1 1/2	
90-ELB-40-32		2	
90-ELB-48-32	3	2	
90-ELB-48-40		2 1/2	
90-ELB-64-48	4	3	



Street Tee
300 PSIW @ 70° F

Part # PIP-	Male Pipe (1)	Female Pipe (2)	S
STR-TEE-4	1/4	1/4	
STR-TEE-6	3/8	3/8	
STR-TEE-8	1/2	1/2	
STR-TEE-12	3/4	3/4	
STR-TEE-16	1	1	
STR-TEE-20	1 1/4	1 1/4	
STR-TEE-24	1 1/2	1 1/2	
STR-TEE-32	2	2	



Tee
300 PSIW @ 70° F

Part # PIP-	Female Pipe (1)	Female Pipe (2)	S
TEE-2	1/8	1/8	*
TEE-4	1/4	1/4	*
TEE-6	3/8	3/8	*
TEE-8	1/2	1/2	*
TEE-12	3/4	3/4	*
TEE-16	1	1	*
TEE-20	1 1/4	1 1/4	*
TEE-24	1 1/2	1 1/2	*
TEE-32	2	2	*
TEE-40	2 1/2	2 1/2	*
TEE-48	3	3	*
TEE-64	4	4	*
TEE-80	5	5	
TEE-96	6	6	



Tee Reducing
300 PSIW @ 70° F

Part # PIP-	Female Run (1)	Female Branch (2)	S
TEE-RED-4-2	1/4	1/8	
TEE-RED-6-4	3/8	1/4	
TEE-RED-8-4	1/2	1/4	
TEE-RED-8-6		3/8	
TEE-RED-12-4	3/4	1/4	
TEE-RED-12-6		3/8	
TEE-RED-12-8		1/2	
TEE-RED-16-8	1	1/2	
TEE-RED-16-12		3/4	
TEE-RED-20-8	1 1/4	1/2	
TEE-RED-20-12		3/4	
TEE-RED-20-16		1	
TEE-RED-24-8	1 1/2	1/2	
TEE-RED-24-12		3/4	
TEE-RED-24-16		1	
TEE-RED-24-20		1 1/4	
TEE-RED-32-8	2	1/2	
TEE-RED-32-12		3/4	
TEE-RED-32-16		1	
TEE-RED-32-20		1 1/4	
TEE-RED-32-24		1 1/2	
TEE-RED-40-24	2 1/2	1 1/2	
TEE-RED-40-32		2	
TEE-RED-48-32	3	2	
TEE-RED-48-40		2 1/2	
TEE-RED-64-40	4	2 1/2	
TEE-RED-64-48		3	



Cross
300 PSIW @ 70° F

Part # PIP-	Female Pipe (1)		S
CROSS-2	1/8"		
CROSS-4	1/4"		
CROSS-6	3/8"		
CROSS-8	1/2"		
CROSS-12	3/4"		
CROSS-16	1"		
CROSS-20	1-1/4"		
CROSS-24	1-1/2"		
CROSS-32	2"		
CROSS-40	2-1/2"		
CROSS-48	3"		
CROSS-64	4"		


Close Nipple
300 PSIW @ 70° F

Part # PIP-	Male Pipe	Length Inches	S
NIP-2-CL	1/8	3/4	
NIP-4-CL	1/4	7/8	
NIP-6-CL	3/8	1	
NIP-8-CL	1/2	1 1/8	
NIP-12-CL	3/4	1 3/8	
NIP-16-CL	1	1 1/2	
NIP-20-CL	1-1/4	1 5/8	
NIP-24-CL	1-1/2	1 3/4	
NIP-32-CL	2	2	
NIP-40-CL	2-1/2	2 1/2	
NIP-48-CL	3	2 5/8	
NIP-64-CL	4	2 7/8	
NIP-80-CL	5	3	
NIP-96-CL	6	3 1/8	


Pipe Nipple
300 PSIW @ 70° F

Part # PIP-	Male Pipe	Length Inches	S
NIP-2-1500	1/8"	1 1/2	
NIP-2-2000		2	
NIP-2-2500		2 1/2	
NIP-2-3000		3	
NIP-2-3500	3 1/2	3 1/2	
NIP-2-4000		4	
NIP-2-4500		4 1/2	
NIP-2-5000		5	
NIP-2-5500	5 1/2	5 1/2	
NIP-2-6000		6	
NIP-2-8000		8	
NIP-2-9000		9	
NIP-2-10000	10	10	
NIP-2-11000		11	
NIP-2-12000		12	

Part # PIP-	Male Pipe	Length Inches	S
NIP-4-1500	1/4"	1 1/2	
NIP-4-2000		2	
NIP-4-2500		2 1/2	
NIP-4-3000		3	
NIP-4-3500	3 1/2	3 1/2	
NIP-4-4000		4	
NIP-4-4500		4 1/2	
NIP-4-5000		5	
NIP-4-5500	5 1/2	5 1/2	
NIP-4-6000		6	
NIP-4-8000		8	
NIP-4-9000		9	
NIP-4-10000	10	10	
NIP-4-11000		11	
NIP-4-12000		12	

Part # PIP-	Male Pipe	Length Inches	S
NIP-6-1500	3/8"	1 1/2	
NIP-6-2000		2	
NIP-6-2500		2 1/2	
NIP-6-3000		3	
NIP-6-3500	3 1/2	3 1/2	
NIP-6-4000		4	
NIP-6-4500		4 1/2	
NIP-6-5000		5	
NIP-6-5500	5 1/2	5 1/2	
NIP-6-6000		6	
NIP-6-8000		8	
NIP-6-9000		9	
NIP-6-10000	10	10	
NIP-6-11000		11	
NIP-6-12000		12	



Part # PIP-	Male Pipe	Length Inches	S
NIP-8-1500	1/2"	1 1/2	
NIP-8-2000		2	
NIP-8-2500		2 1/2	
NIP-8-3000		3	
NIP-8-3500	3 1/2	3 1/2	
NIP-8-4000		4	
NIP-8-4500		4 1/2	
NIP-8-5000		5	
NIP-8-5500	5 1/2	5 1/2	
NIP-8-6000		6	
NIP-8-8000		8	
NIP-8-9000		9	
NIP-8-10000	10	10	
NIP-8-11000		11	
NIP-8-12000		12	

Part # PIP-	Male Pipe	Length Inches	S
NIP-12-1500	3/4"	1 1/2	
NIP-12-2000		2	
NIP-12-2500		2 1/2	
NIP-12-3000		3	
NIP-12-3500	3 1/2	3 1/2	
NIP-12-4000		4	
NIP-12-4500		4 1/2	
NIP-12-5000		5	
NIP-12-5500	5 1/2	5 1/2	
NIP-12-6000		6	
NIP-12-8000		8	
NIP-12-9000		9	
NIP-12-10000	10	10	
NIP-12-11000		11	
NIP-12-12000		12	

Part # PIP-	Male Pipe	Length Inches	S
NIP-16-2000	1"	2	
NIP-16-2500		2 1/2	
NIP-16-3000		3	
NIP-16-3500		3 1/2	
NIP-16-4000	4	4	
NIP-16-4500		4 1/2	
NIP-16-5000		5	
NIP-16-5500		5 1/2	
NIP-16-6000	6	6	
NIP-16-8000		8	
NIP-16-9000		9	
NIP-16-10000		10	
NIP-16-11000	11	11	
NIP-16-12000		12	

Part # PIP-	Male Pipe	Length Inches	S
NIP-20-2000	1 1/4"	2	
NIP-20-2500		2 1/2	
NIP-20-3000		3	
NIP-20-3500		3 1/2	
NIP-20-4000	4	4	
NIP-20-4500		4 1/2	
NIP-20-5000		5	
NIP-20-5500		5 1/2	
NIP-20-6000	6	6	
NIP-20-8000		8	
NIP-20-9000		9	
NIP-20-10000		10	
NIP-20-11000	11	11	
NIP-20-12000		12	



Part # PIP-	Male Pipe	Length Inches	S
NIP-24-2000	1 1/2"	2	
NIP-24-2500		2 1/2	
NIP-24-3000		3	
NIP-24-3500		3 1/2	
NIP-24-4000	4	4	
NIP-24-4500		4 1/2	
NIP-24-5000		5	
NIP-24-5500		5 1/2	
NIP-24-6000	6	6	
NIP-24-8000		8	
NIP-24-9000		9	
NIP-24-10000		10	
NIP-24-11000	11	11	
NIP-24-12000		12	

Part # PIP-	Male Pipe	Length Inches	S
NIP-32-2500	2"	2 1/2	
NIP-32-3000		3	
NIP-32-3500		3 1/2	
NIP-32-4000		4	
NIP-32-4500	4 1/2	4 1/2	
NIP-32-5000		5	
NIP-32-5500		5 1/2	
NIP-32-6000		6	
NIP-32-8000	8	8	
NIP-32-9000		9	
NIP-32-10000		10	
NIP-32-11000		11	
NIP-32-12000	12	12	

Part # PIP-	Male Pipe	Length Inches	S
NIP-40-3000	2 1/2"	3	
NIP-40-3500		3 1/2	
NIP-40-4000		4	
NIP-40-4500		4 1/2	
NIP-40-5000	5	5	
NIP-40-5500		5 1/2	
NIP-40-6000		6	
NIP-40-8000		8	
NIP-40-9000	9	9	
NIP-40-10000		10	
NIP-40-11000		11	
NIP-40-12000		12	

Part # PIP-	Male Pipe	Length Inches	S
NIP-48-3000	3"	3	
NIP-48-3500		3 1/2	
NIP-48-4000		4	
NIP-48-4500		4 1/2	
NIP-48-5000	5	5	
NIP-48-5500		5 1/2	
NIP-48-6000		6	
NIP-48-8000		8	
NIP-48-9000	9	9	
NIP-48-10000		10	
NIP-48-11000		11	
NIP-48-12000		12	

Black Pipe Fittings Schedule 40



Pipe Nipple
300 PSIW @ 70° F

Part # PIP-	Male Pipe	Length Inches	S
NIP-64-4000	4"	4	
NIP-64-4500		4 1/2	
NIP-64-5000		5	
NIP-64-5500		5 1/2	
NIP-64-6000		6	
NIP-64-8000		8	
NIP-64-9000		9	
NIP-64-10000		10	
NIP-64-11000		11	
NIP-64-12000		12	

Part # PIP-	Male Pipe	Length Inches	S
NIP-80-4500	5"	4 1/2	
NIP-80-5000		5	
NIP-80-5500		5 1/2	
NIP-80-6000		6	
NIP-80-8000		8	
NIP-80-9000		9	
NIP-80-10000		10	
NIP-80-11000		11	
NIP-80-12000		12	

Part # PIP-	Male Pipe	Length Inches	S
NIP-96-4500	6"	4 1/2	
NIP-96-5000		5	
NIP-96-5500		5 1/2	
NIP-96-6000		6	
NIP-96-8000		8	
NIP-96-9000		9	
NIP-96-10000		10	
NIP-96-11000		11	
NIP-96-12000		12	



Floor Flange
Not for Pressure
Structural use only

Part # PIP-	Male Pipe	Flange O.D. Ins.	S
Flange-Floor-4	1/4"	2 3/16	
Flange-Floor-6	3/8"	3	
Flange-Floor-8	1/2"	3 1/2	
Flange-Floor-12	3/4"	3 1/2	
Flange-Floor-16	1"	4	
Flange-Floor-20	1-1/4"	4	
Flange-Floor-24	1-1/2"	4 1/2	
Flange-Floor-32	2"	5 1/2	



Lock Nut

Part # PIP-	Male Pipe	Flange O.D. Ins.	S
LOCKNUT-2	1/8"	2 3/16	
LOCKNUT-4	1/4"	3	
LOCKNUT-6	3/8"	3 1/2	
LOCKNUT-8	1/2"	3 1/2	
LOCKNUT-12	3/4"	4	
LOCKNUT-16	1"	4	
LOCKNUT-20	1-1/4"	4 1/2	
LOCKNUT-24	1-1/2"	5 1/2	
LOCKNUT-32	2"		



Plug Alen Socket
300 PSIW @ 70° F

Part # PIP-	Male Pipe	S
PLUG-AS-2	1/8"	
PLUG-AS-4	1/4"	
PLUG-AS-6	3/8"	
PLUG-AS-8	1/2"	
PLUG-AS-12	3/4"	
PLUG-AS-16	1"	
PLUG-AS-20	1-1/4"	
PLUG-AS-24	1-1/2"	
PLUG-AS-32	2"	
PLUG-AS-40	2 1/2	
PLUG-AS-48	3	
PLUG-AS-64	4	



Plug Square Socket
300 PSIW @ 70° F

Part # PIP-	Male Pipe	S
PLUG-SS-4	1/4"	
PLUG-SS-6	3/8"	
PLUG-SS-8	1/2"	
PLUG-SS-12	3/4"	
PLUG-SS-16	1"	
PLUG-SS-20	1-1/4"	
PLUG-SS-24	1-1/2"	
PLUG-SS-32	2"	
PLUG-SS-40	2 1/2	
PLUG-SS-48	3	
PLUG-SS-64	4	



Swage Nipple
300 PSIW @ 70° F

Part # PIP-	Male Pipe (1)	Male Pipe (2)	S
SWAGE-16-12	1"	3/4"	
SWAGE-20-12	1-1/4"	3/4"	
SWAGE-20-16		1"	
SWAGE-24-12	1-1/2"	3/4"	
SWAGE-24-16		1"	
SWAGE-24-20		1 1/4"	
SWAGE-32-12	2"	3/4"	
SWAGE-32-16		1"	
SWAGE-32-20		1 1/4"	
SWAGE-32-24		1 1/2"	
SWAGE-40-20	2 1/2"	1 1/4"	
SWAGE-40-24		1 1/2"	
SWAGE-40-32		2"	
SWAGE-48-24	3"	1 1/2"	
SWAGE-48-32		2"	
SWAGE-48-40		2 1/2"	
SWAGE-64-24	4"	1 1/2"	
SWAGE-64-32		2"	
SWAGE-64-40		2 1/2"	
SWAGE-64-48		3"	



Vic Style 40 Nipple
300 PSIW @ 70° F

Part # PIP-	Vic End	Male Pipe	S
VIC40-12-12	3/4	3/4	
VIC40-16-16	1	1	
VIC40-20-20	1 1/4	1 1/4	
VIC40-24-24	1 1/2	1 1/2	
VIC40-32-32	2	2	
VIC40-40-40	2 1/2	2 1/2	
VIC40-48-48	3	3	
VIC40-64-64	4	4	
VIC40-80-80	5	5	
VIC40-96-96	6	6	
VIC40-128-128	8	8	
VIC40-160-160	10	10	
VIC40-192-192	12	12	



Handle - Tech



Hose Handles



Pipe Handles

Handle-Tech handles are a ground breaking tool for today's oil, gas and waste management industries. The easy to use mechanism enables you to clamp onto hose or pipe easily allowing you to grip, torque, and release single-handedly through a natural fluid movement.

Handle-Tech is an Easy, Safe & efficient way to manipulate hose in Transportation, Oilfield & Plant Operations.

Specifications Construction Material

Handles are composed of Long Glass Nylon which enhances the thermal properties compared to commonly used materials such as aluminum; in addition, this lightweight material is stronger and more wear-resistant.

Temperatures of -40C to +50C, each handle is designed to battle the most hostile environments

The Handle-Tech Handle has a safe lifting capacity of 400lbs with a breaking point at 1125 lbs.

*Note that this device was designed for hand-use only and should only be used as designed.



Hose Handles

Part Number	Hose Size	Price
300SUC	3" - 3.75"	\$ 170.00
400SUC	4" - 4.75"	\$ 180.00
500SUC	5" - 5.75"	\$ 190.00
600SUC	6" - 6.75"	\$ 200.00
700SUC	7" - 7.75"	\$ 210.00
800SUC	8" - 8.75"	\$ 220.00
900SUC	9" - 9.75"	\$ 230.00
1000SUC	10" - 10.75"	\$ 240.00
1100SUC	11" - 11.75"	\$ 250.00
1200SUC	12" - 12.75"	\$ 260.00



Pipe Handles

Part Number	Pipe Size	Price
200PIPE	1.5" - 2.5"	\$ 180.00
300PIPE	2.5" - 3.5"	\$ 190.00
400PIPE	3.5" - 4.5"	\$ 190.00
500PIPE	4.5" - 5.5"	\$ 200.00
600PIPE	5.5" - 6.5"	\$ 210.00
700PIPE	6.5" - 7.5"	\$ 220.00
800PIPE	7.5" - 8.5"	\$ 230.00
900PIPE	8.5" - 9.5"	\$ 240.00
1000PIPE	9.5" - 10.5"	\$ 250.00
1100PIPE	10.5" - 11.5"	\$ 260.00
1200PIPE	11.5" - 12.5"	\$ 270.00
1300PIPE	12.5" - 13.5"	\$ 280.00
1400PIPE	13.5" - 14.5"	\$ 260.00



All Handle-Tech Handles have a Maximum Lifting Weight of 400LBS/181Kg. Designed to be used ONLY as a Hand Tool

Pipe Support U-Bolts - Recommended for support, or guide of heavy loads; often employed in power, process plant and marine service.

Size Range : 1/2" through 36"

Material : Carbon steel U-bolt and four finished hex nuts

Finish : Plain or Galvanized

Service : Recommended for support, or guide of heavy loads; often employed in power, process plant and marine service.

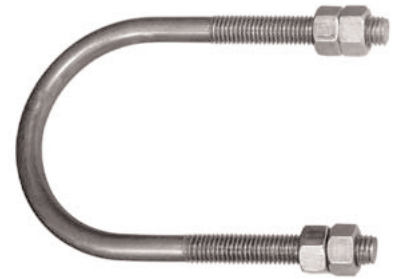
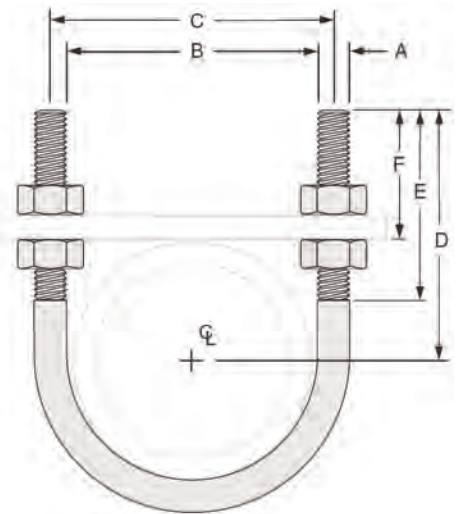


Fig. 137S: Loads (lbs) • Weight (lbs) • Dimensions (in)

Pipe Size	Rod Size A	Max Normal Load 650° F	Max Normal Load 750° F	Max Side Load 650° F	Wt	B	C	D	E	F
1/2					0.11	15/16	1 3/16			2 5/16
3/4	1/4	580	454	145	0.12	1 1/8	1 3/8	2 3/4	2 1/8	2 7/32
1					0.12	1 3/8	1 5/8			2 3/32
1 1/4					0.28	1 11/16	2 1/16	2 7/8	2 1/8	2 1/32
1 1/2	3/8	1,460	1,144	365	0.30	2	2 3/8	3	2 1/2	2 1/16
2					0.33	2 7/16	2 13/16	3 1/4	2 1/2	2 1/16
2 1/2					0.73	2 15/16	3 7/16	3 3/4		2 5/16
3					0.78	3 9/16	4 1/16	4	3	2 1/4
3 1/2	1/2	2,700	2,114	675	0.84	4 1/16	4 9/16	4 1/4		2 1/4
4					0.90	4 9/16	5 1/16	4 1/2		2 1/4
5					1.00	5 5/8	6 1/8	5		2 7/32
6	5/8	4,320	3,382	1,080	2.00	6 3/4	7 3/8	6 1/8	3 3/4	2 13/16
8					2.30	8 3/4	9 3/8	7 1/8		
10	3/4	6,460	5,060	1,615	4.90	10 7/8	11 5/8	8 3/8	4	3
12					7.70	12 7/8	13 3/4	9 5/8	4	
14	7/8	9,960	7,016	2,490	8.30	14 1/8	15	10 1/4	4 1/4	3 1/4
16					9.20	16 1/8	17	11 1/4	4 1/4	
18					13.50	18 1/8	19 1/8	12 5/8		
20					14.60	20 1/8	21 1/8	13 5/8		
24	1	11,800	9,240	---	19.00	24 1/8	25 1/8	15 5/8	4 3/4	3 5/8
30					19.10	30 1/8	31 1/8	18 5/8		
36					23.20	36 1/8	37 1/8	21 5/8		



Ordering Fig. 137: Specify pipe size x rod size (e.g., 6 x 5/8), figure number, name. U-bolt will be furnished with longer tangents D or with longer threads E if so required and ordered. If hex nuts are not required, specify "without hex nuts".

Ordering Fig. 137S: Specify figure number, name, material specification, dimensions A, B, C, D, and E, and "with hex nuts" or "without hex nuts".

Note: The acceptability of galvanized coatings at temperatures above 450°F is at the discretion of the end user

*When the combination of a normal load and a side load occurs, a straight line interaction formula may be used to determine if the

Fig. 137 is still within the allowable stress range:
 $P_n/P_{na} + P_s/P_{sa} \leq 1$

Where:

P_n = actual applied normal load; P_{na} = allowable normal load for the Fig. 137;

P_s = actual applied side load;

P_{sa} = allowable side load for the Fig. 137

Nuts must be snug tight in installation to achieve side loads shown.